



Microsoft  
Azure



OSC

# Azure AD and Enterprise Application

an OSC Technical Education Webinar

With David Chou, Microsoft  
June 2nd, 2016

## Agenda:

- Intro, What is Azure AD?
- Azure AD being Used in Enterprise Scenarios
- Azure AD be Used in Enterprise Applications
  - Web
  - Cloud
  - Mobile
- Demos
- What to Remember in Azure AD/App Deployments
- Q&A

# Azure and Azure AD Overview

David Chou, Microsoft  
Technical Director

# Microsoft Azure

## Platform Services

### Security & Management

- Portal
- Azure Active Directory
- Azure AD B2C
- Multi-Factor Authentication
- Automation
- Scheduler
- Key Vault
- Store/Marketplace
- VM Image Gallery & VM Depot

### Services Compute

- Cloud Services
- Service Fabric
- Batch
- RemoteApp

### Integration

- Storage Queues
- BizTalk Services
- Hybrid Connections
- Service Bus

### Media & CDN

- Media Services
- Content Delivery Network (CDN)

### Web and Mobile

- Web Apps
- API Apps
- Mobile Apps
- Logic Apps
- API Management
- Notification Hubs

### Developer Services

- Visual Studio
- Azure SDK
- VS Online
- App Insights

### Data

- SQL Database
- Data Warehouse
- DocumentDB
- Redis Cache
- Azure Search
- Storage Tables

### Analytics & IoT

- HDInsight
- Machine Learning
- Stream Analytics
- Data Lake
- Data Factory
- Event Hubs
- Data Catalog
- IoT Hub
- Mobile Engagement

### Hybrid Operations

- Azure AD Health Monitoring
- AD Privileged Identity Management
- Domain Services
- Backup
- Operational Analytics
- Import/Export
- Azure Site Recovery
- StorSimple

## Infrastructure Services

### OS/Server Compute

- Virtual Machines
- Container Service

### Storage

- BLOB Storage
- Azure Files
- Premium Storage

### Networking

- Virtual Network
- Load Balancer
- DNS
- Express Route
- Traffic Manager
- VPN Gateway
- App Gateway

Datcenter Infrastructure (30 Regions, 22 Online)



# Azure Active Directory

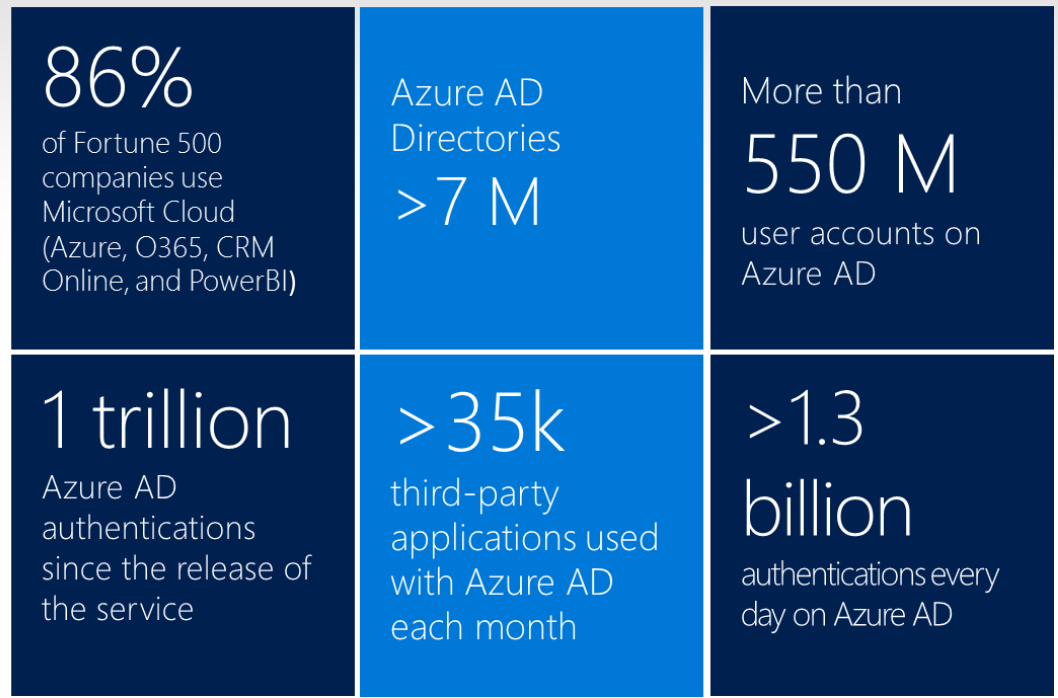
Microsoft's "Identity Management as a Service (IDaaS)" for organizations.

Millions of independent identity systems controlled by enterprise and government "tenants."

Information is owned and used by the controlling organization—not by Microsoft.

Born-as-a-cloud directory for Office 365. Extended to manage across many clouds.

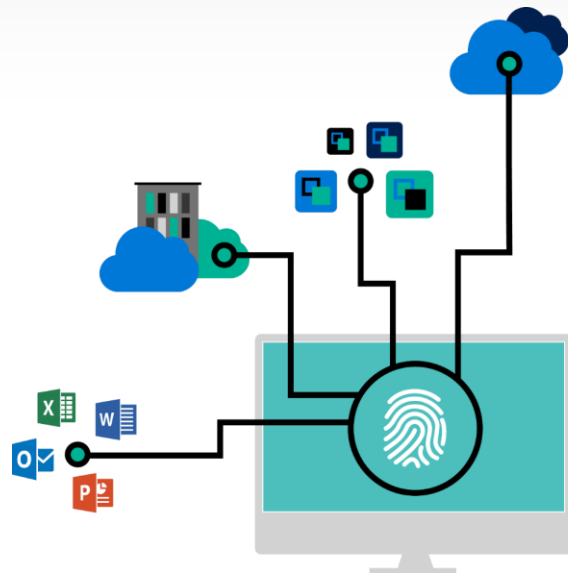
Evolved to manage an organization's relationships with its customers/citizens and partners (B2C and B2B).



Every Office 365 and Microsoft Azure customer uses Azure Active Directory

# Azure Active Directory Scenarios

- 1000s of apps, 1 identity
- Making the lives of users (and IT) easier
- Managing identities
- Collaborating with partners
- Enabling anytime/anywhere productivity
- Identity-driven security
- Connecting with consumers
- Your domain controller as a service

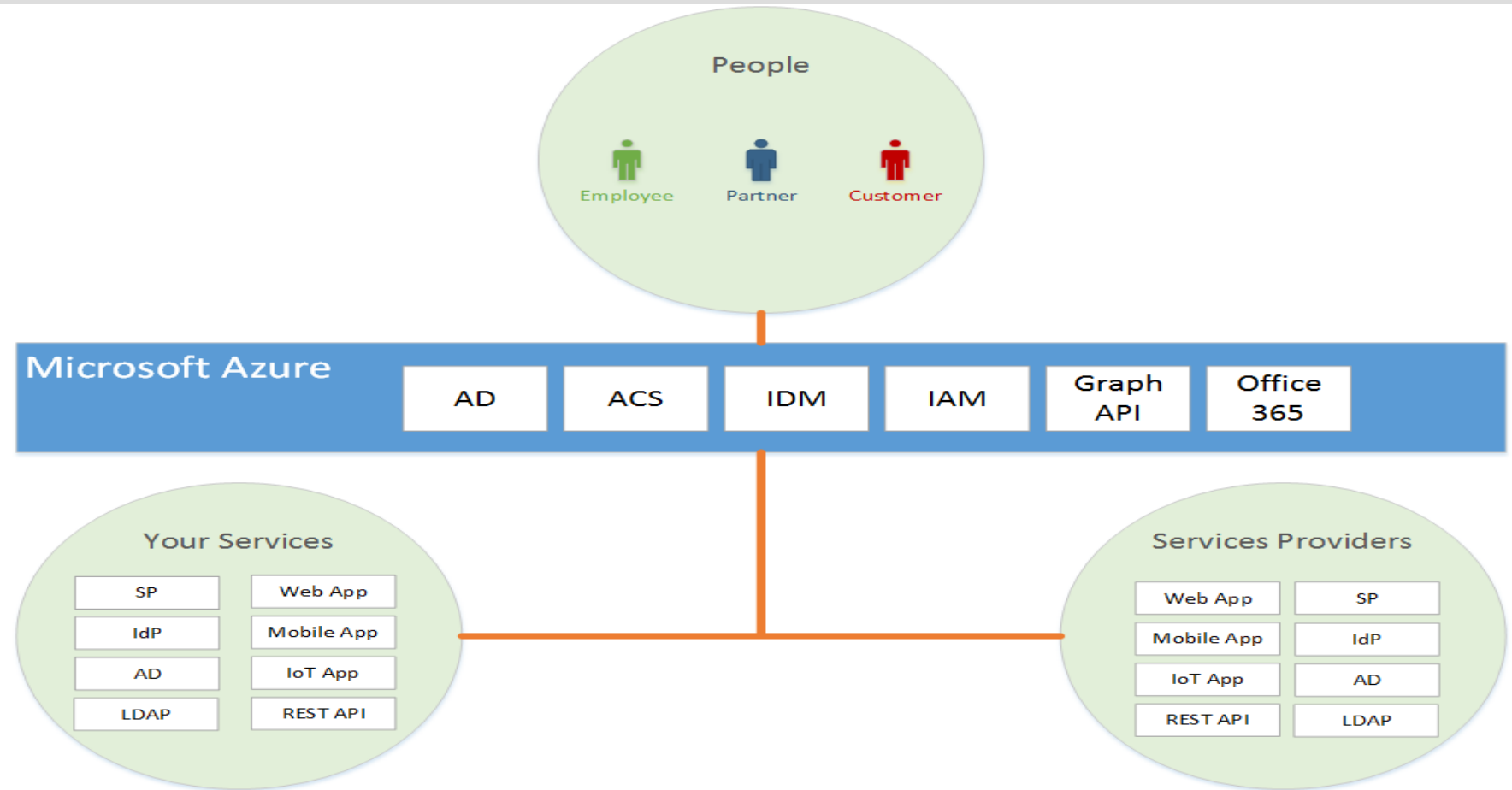


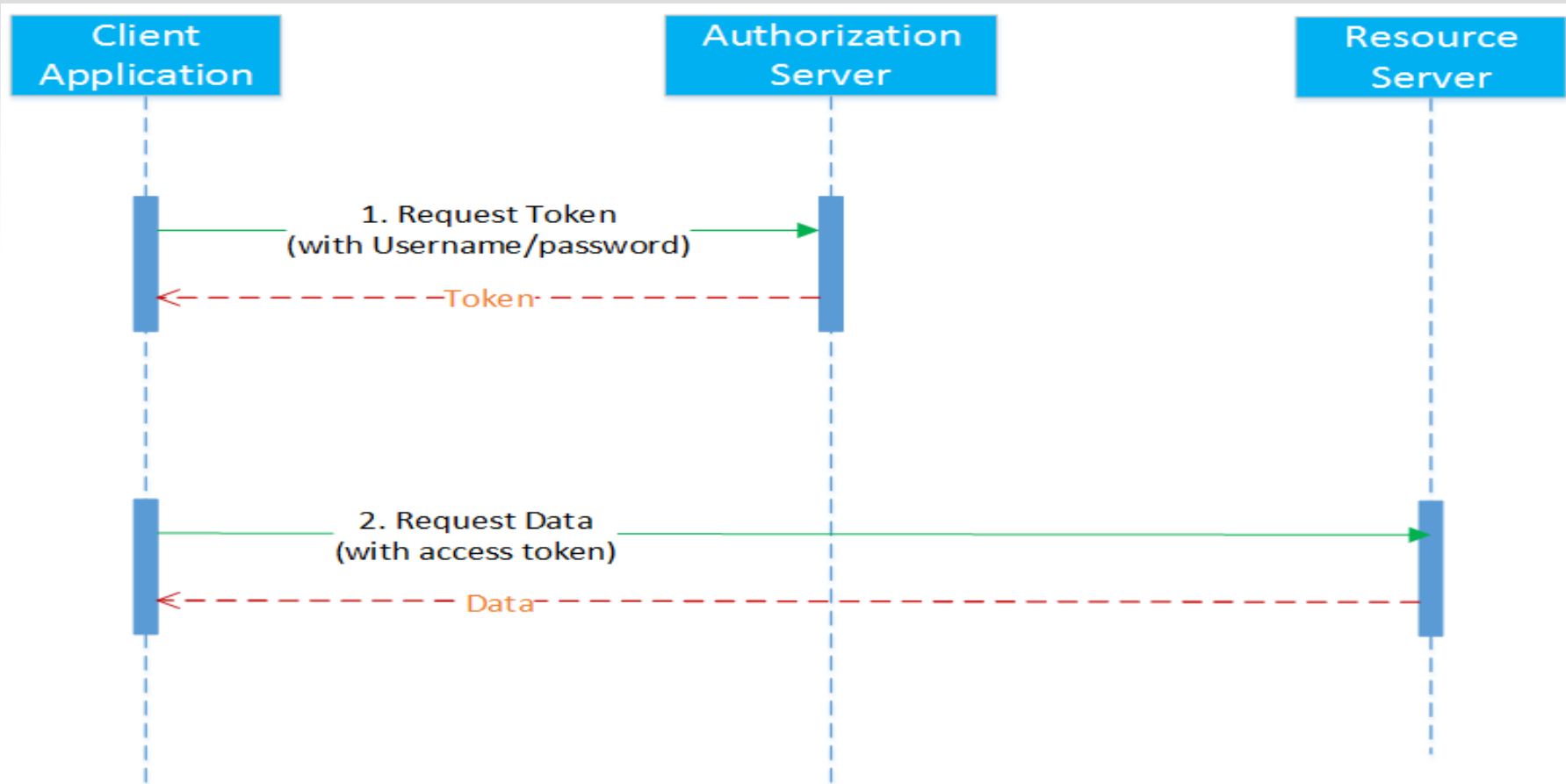
# Azure AD – Application Integration

Julian Zhu, OSC  
Managing Partner

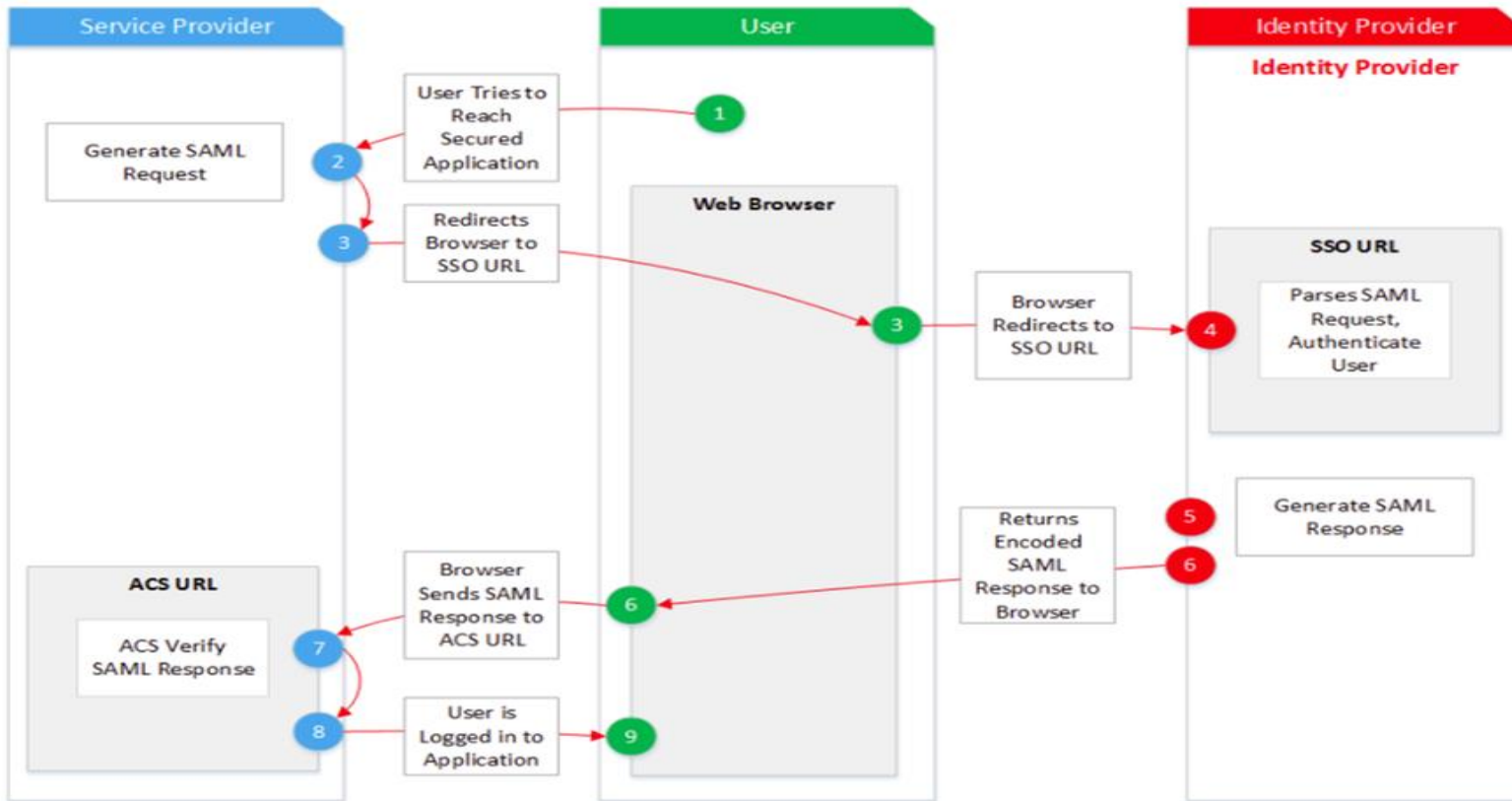
- Identity & Security Policy (Azure AD Console)
- User Authentication/Application Integration
  - OAUTH
  - SAML
- Microsoft Graph API
  - How to access Azure AD (O365 and other resources)
  - Actual Code for integration
- 3<sup>rd</sup> Party Application Integration
  - Actual web and mobile app



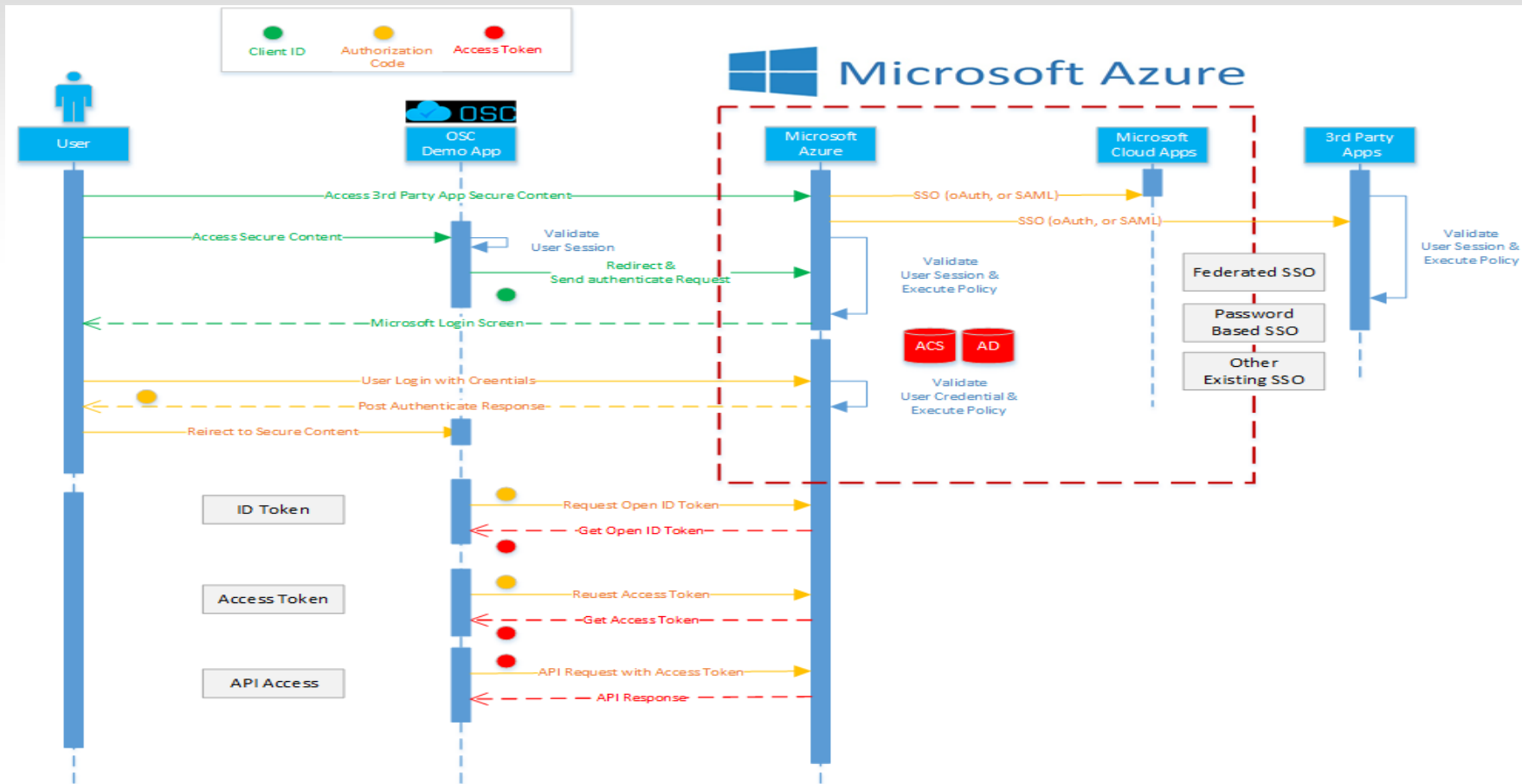




## High Level SAML Architecture



# Azure AD Architecture



# Azure AD – More Considerations

## More Considerations

A lot of Ground to Cover. For example:

Enterprise Strategy and Roadmap

Synchronization and Migration

IoT

Other SP and IDP

Other Cloud

# Demos

1. **Web->to-> Azure AD**
2. **Mobile -> to -> Azure AD**

Julian Zhu, OSC  
Managing Partner

## **OSC Technologies, LLC:**

- Full service advanced IT consulting firm:
  - Project Design, Project Scoping, Architecture
  - Development, Deployment, Testing

## **Staff:**

- Over 15 Microsoft certifications
- 10 patents, 3 PhDs, multiple Masters
- 100s of years in cumulative project experience
- On-Shore and
- Off-shore engineers

## Full Service Application Building Team:

- Architects, Project Management, Coders, Implementers, Maintenance Programmers
- .NET and Java
- Front End Specialist
- Both:
  - Existing Projects
  - Prototypes
- Webservices/APIs:
  - REST APIs
  - SAML, WS-\*, SCEP, etc.



- **OSC: Your Identity/Access Experts:**

- **SSO:**

- SAML integration with on-premise on cloud applications
- Directory SSO into mobile, desktop and cloud applications
- OAUTH integration with desktop, cloud and mobile applications
- AD domain to enterprise and cloud applications

- **Provisioning:**

- AD to cloud provisioning and identity synching
- AD to SQL provisioning and identity synching
- Full workflow of provisioning and identity lifecycle
- Granular and authorized identity migration
- Identity provisioning and synching across enterprises



# Azure AD – For Your Enterprise Apps

1

## Additional Information

<http://bit.ly/1Wk41Lk>

Microsoft Azure AD Documentation

2

## Connect with OSC

Schedule a personalized project scoping w/ OSC

<http://www.oscgc.com/contact-us/>

3

## Have OSC Deploy a App utilizing Azure AD

Mobile, Web, Cloud

# Thank You!

Who	Title	E-Mail	Phone
David Chou, Microsoft	Technical Director	<a href="mailto:david.chou@microsoft.com">david.chou@microsoft.com</a>	+1.213-703-8183
Yaodong Hu, OSC	CTO	<a href="mailto:Yaodong.hu@oscg.com">Yaodong.hu@oscg.com</a>	+1.781.492.6651
Julian Zhu	Technical Director	<a href="mailto:Julian.zhu@oscg.com">Julian.zhu@oscg.com</a>	+1.401 862 1828
Garret Grajek, OSC	CEO	<a href="mailto:ggrajek@oscg.com">ggrajek@oscg.com</a>	+1.949.505.9703

<http://www.oscg.com/identity-management/>